

## LAURA-XP lenses for CREE XP-E LEDs



- Designed & optimized for Cree XP-E series of LEDs
- Lens material optical grade PMMA with high UV and temperature resistance (105°C/220°F). Allows use of high current and temperature conditions.
- Best available optical efficiency, up to 90%, with an extremely good cutoff of light
- Integrated holder. Fastening to heat sink with a PU foam adhesive tape of automotive grade
- We advise customer to ensure the suitability and sufficiency of the bond in the end product. For example, mechanical stress, vibration and holes on the surface of the circuit board weaken the strength of the tape.
- Please check fastening details from this link:  
([http://www.ledil.com/datasheets/DataSheet\\_TAPE.pdf](http://www.ledil.com/datasheets/DataSheet_TAPE.pdf))
- Compact dimensions 21.6 x 21.6 mm. Square form enables easy build of matrix without any gaps between lenses.

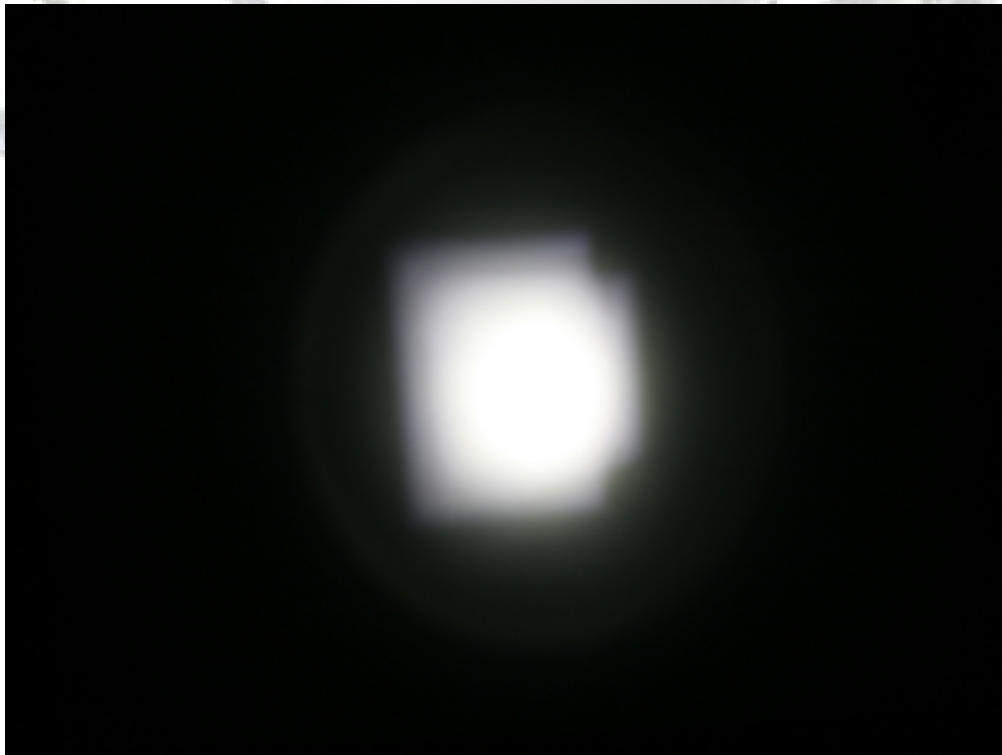
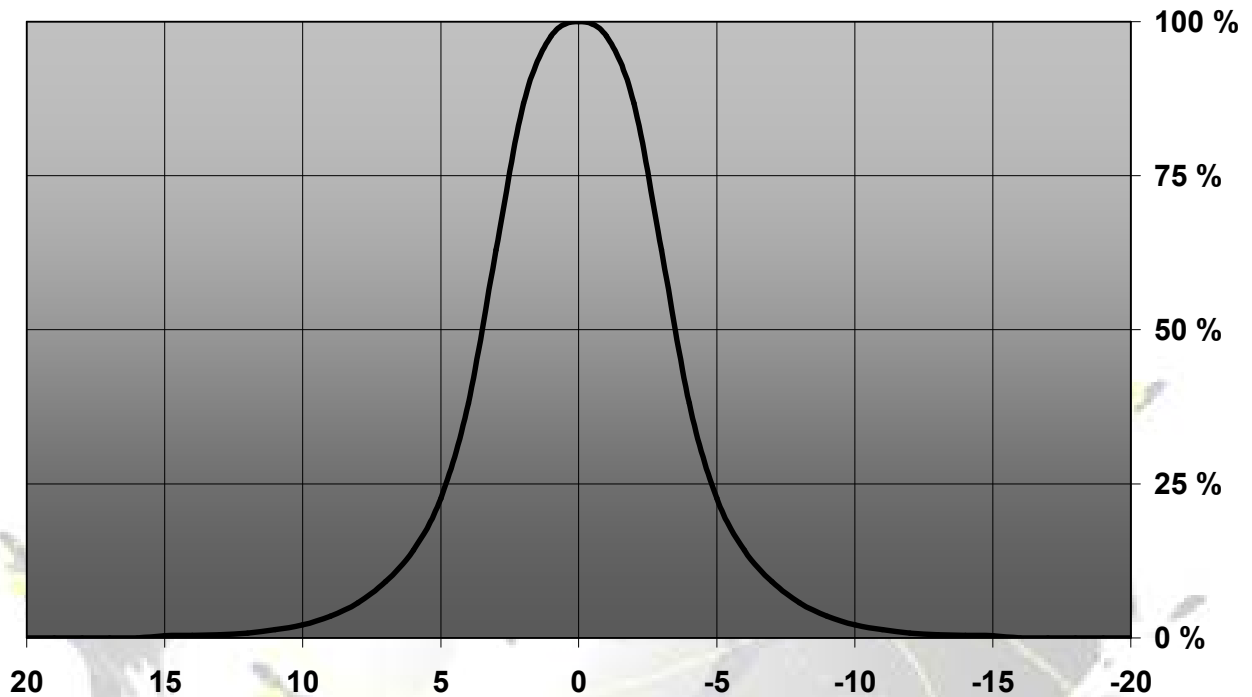
## LENS TYPES

NAME	ORDERING CODE	FWHM Angle
LAURA REAL SPOT	CA11353_Laura-RS-XP-tape	±3.5°
LAURA SMOOTH SPOT	CA11643_Laura-SS-XP-tape	Coming soon
LAURA DIFFUSER	CA11360_Laura-D-XP-tape	±7°
LAURA MEDIUM	CA11355_Laura-M-XP-tape	±15°
LAURA OVAL	CA11365_Laura-O-XP-tape	±20° x ±6°

© Ledil Oy – PRELIMINARY - Subject to change without prior notice

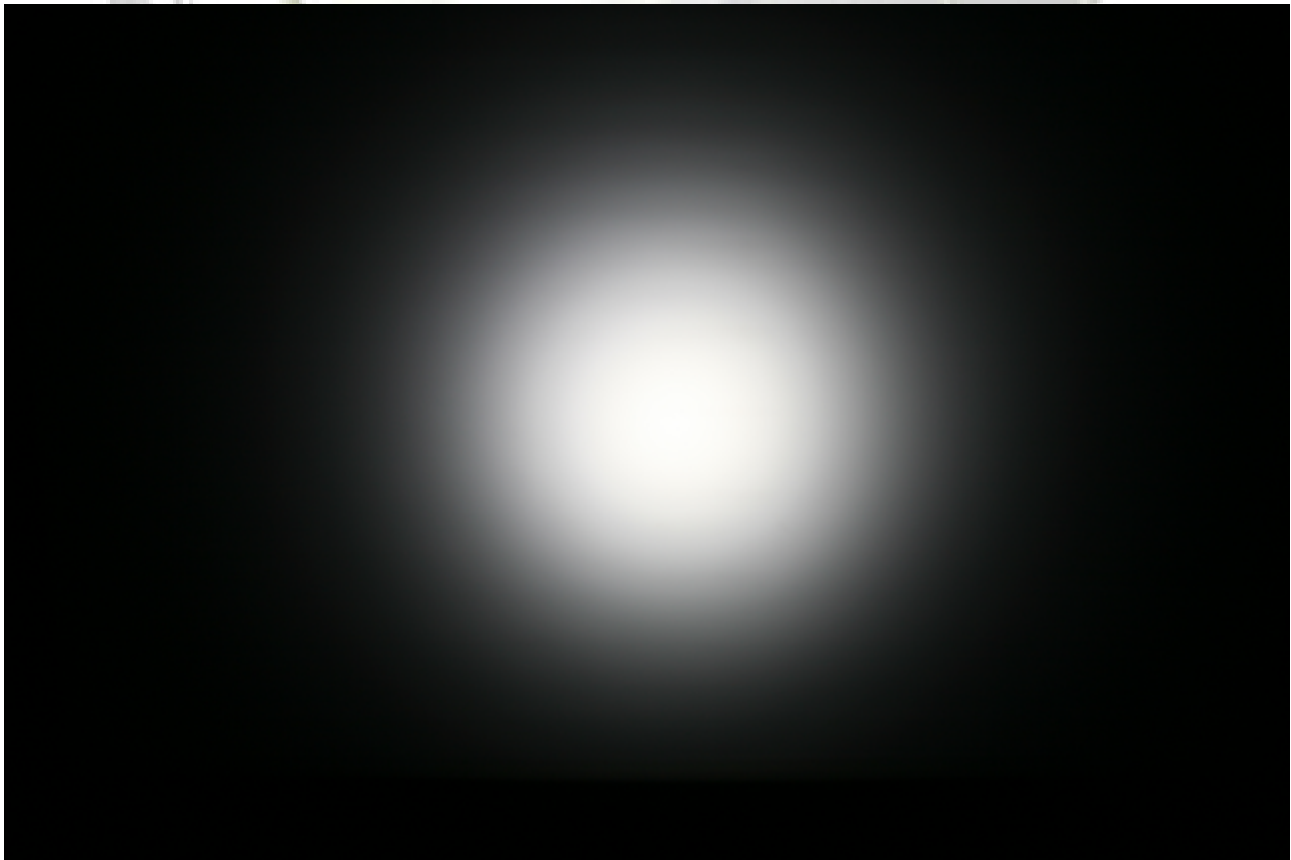
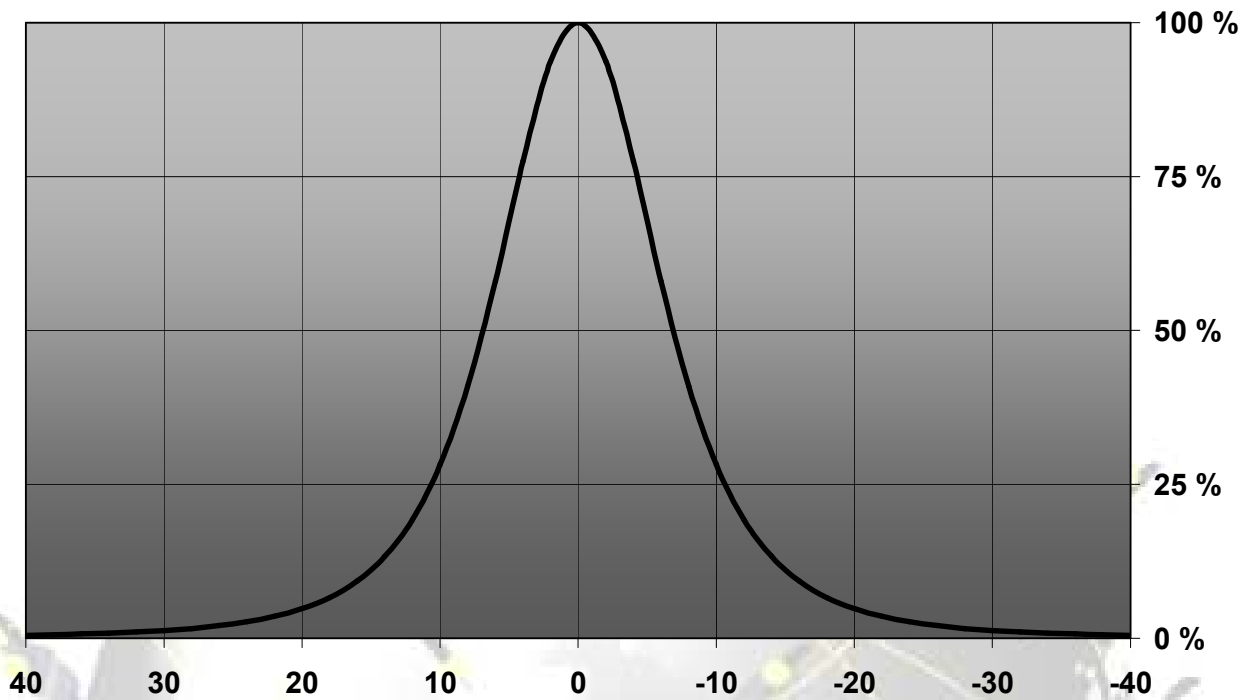
## MEASUREMENTS

Relative Intensity of CA11353\_Laura-RS-XP-tape



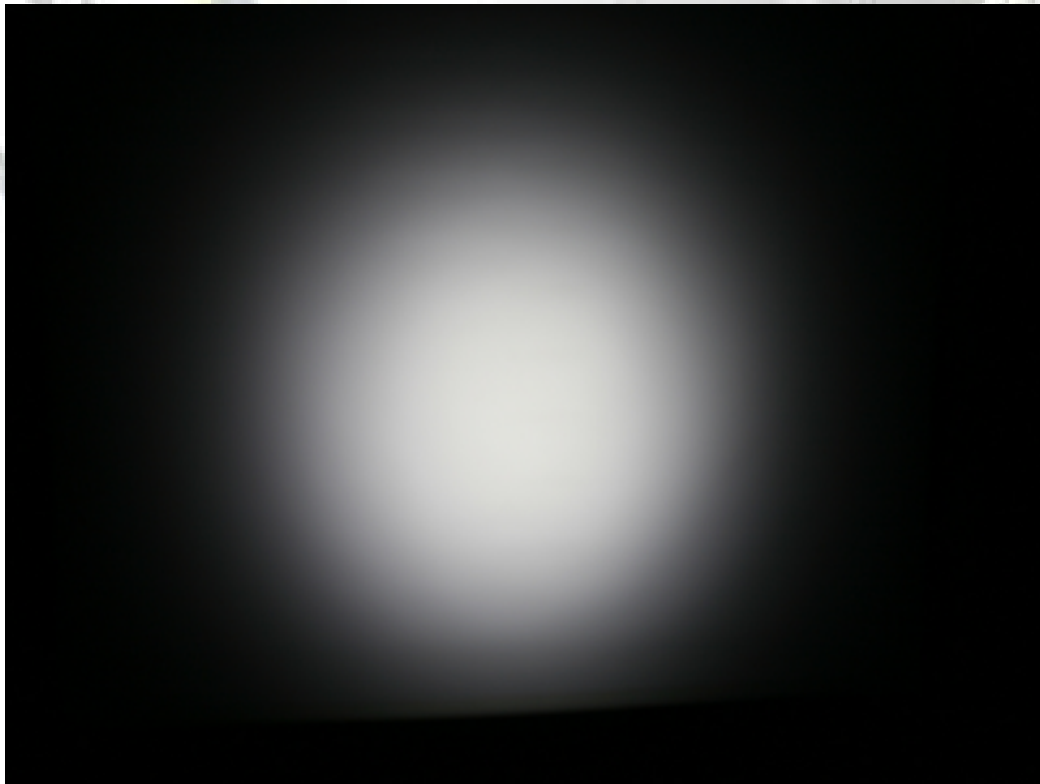
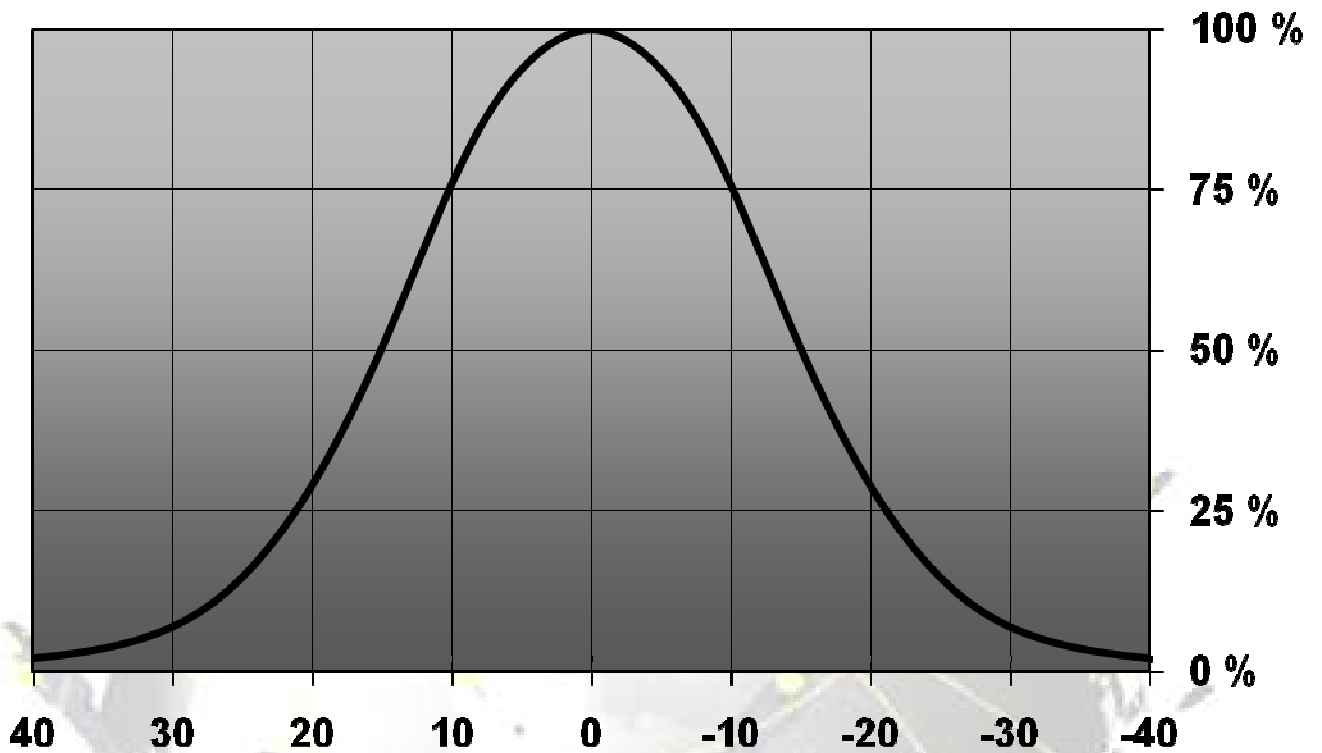
© Ledil Oy – PRELIMINARY - Subject to change without prior notice

Relative intensity of CA11360\_Laura-D-XP-tape



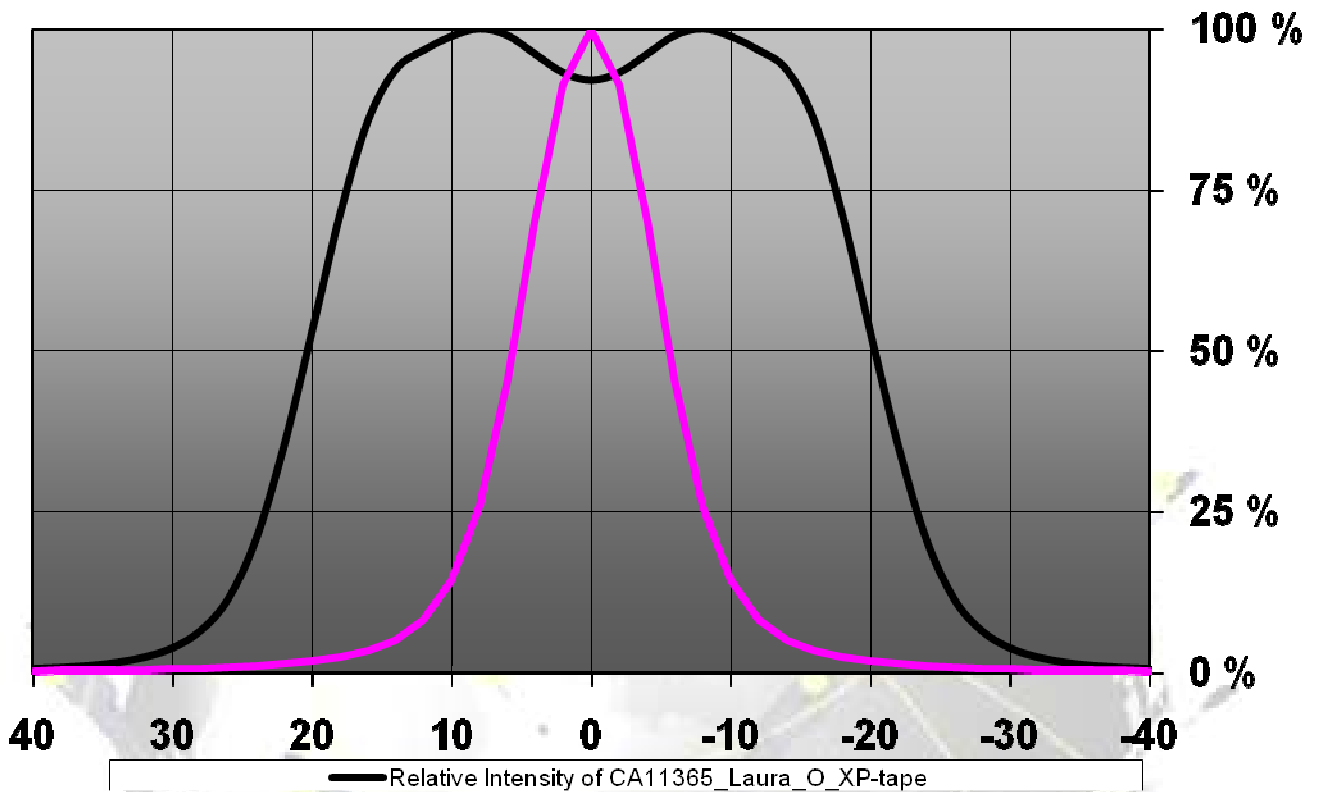
© Ledil Oy – PRELIMINARY - Subject to change without prior notice

## Relative intensity of CA11355\_Laura-M-XP-tape



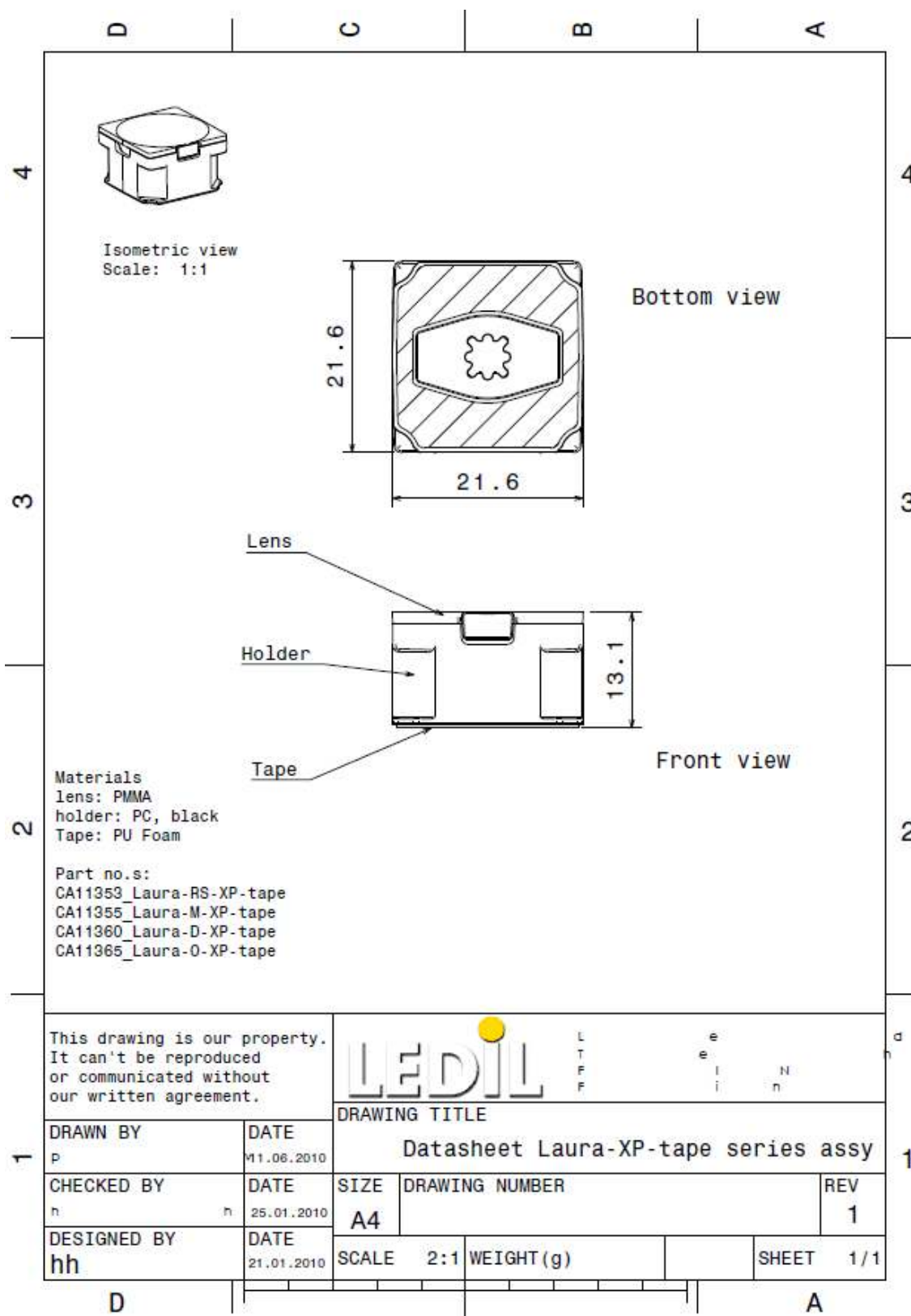
© Ledil Oy – PRELIMINARY - Subject to change without prior notice

## Relative intensity of CA11365\_Laura-O-XP-tape



© Ledil Oy – PRELIMINARY - Subject to change without prior notice

## DRAWINGS



© Ledil Oy - PRELIMINARY - Subject to change without prior notice